

Zip[®]

Instant Boiling Water



New electronic Zip Hydroboil[®]
Cuts energy consumption dramatically



Sydney: an estimated 30,000 Zip instant boiling water systems have been installed in the central business district alone.



Dubai: Zip is featured in many landmark buildings, including InterContinental Dubai Festival City.



Hong Kong: Zip instant boiling water is installed throughout the stunning Chek Lap Kok Airport.



No waiting for water to boil with Zip instant boiling water

Now Zip brings the practical advantages of instant boiling water to kitchens world-wide

Saves time

No more time wasted waiting for water to boil – Zip gives boiling water instantly, at the touch of a tap.

Saves energy

No energy wasted boiling more water than needed – fingertip control brings you a cup-full or pot-full at a time.

Saves space

No cluttered kitchen counters – Zip instant boiling water eliminates the need for kettles and exposed power cords.

Saves money

Costs little to run – thanks to energy-efficient design and electronic controls minimising energy consumption.



Frankfurt: the head office of the Dresdner Bank is equipped with Zip instant boiling water systems.



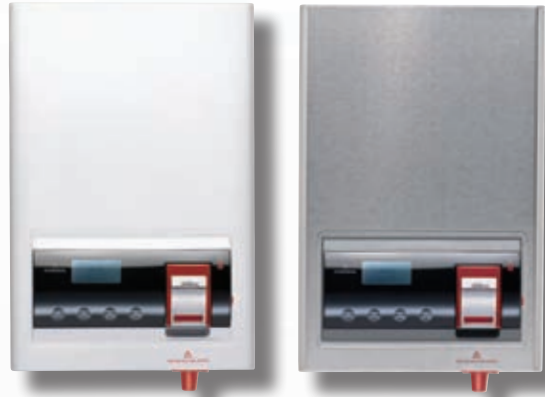
London: offices of The Greater London Authority are also home to Zip instant boiling water systems.



New electronic Zip Hydroboil: six models to choose from

- Choice of three capacities
- Choice of two case finishes
- All are supplied with triple action water filtration
- All are covered by extended warranty

Zip Hydroboil 3.0 Litre in white steel or stainless steel

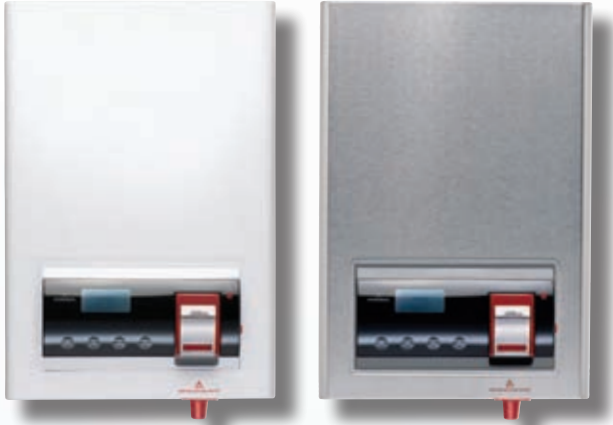


Zip Hydroboil 3.0 Litre gives up to 18 cups at one time with a recovery rate of up to 100 cups per hour. Ample capacity for smaller offices, shops and factories.

White steel case order code 203065
Stainless steel case order code 203067



Zip Hydroboil 5.0 Litre in white steel or stainless steel



Zip Hydroboil 5.0 Litre gives up to 30 cups at one time with a recovery rate of up to 150 cups per hour. Most popular size for office, shop and factory kitchens.

White steel case order code 205065
Stainless steel case order code 205067

Zip Hydroboil 7.5 Litre in white steel or stainless steel



Zip Hydroboil 7.5 Litre gives up to 45 cups at one time with a recovery rate of up to 150 cups per hour. Bigger capacity for busy kitchens, canteens and restaurants.

White steel case order code 207065
Stainless steel case order code 207067





New electronic Zip Hydroboil: brings you more safety features than ever



Now every Zip Hydroboil is supplied with triple-action water filtration

- A special five-micron Zip filter removes particulates contaminating the water supply.
- The filter also inhibits accumulation of mineral scale in the boiling water chamber.
- Better still, it reduces chlorine and other chemicals as per NSF/ANSI 42 and/or 53.
- Provides crystal-clear instant boiling water for great-tasting tea, coffee, or cooking.



1. Fingertip control for safe cup filling.
Allows you to start and stop the boiling water flow with great accuracy.



2. Lift to lock flow "on" to fill pots.
Allows you to fill teapots and coffee plungers safely "hands free".



3. Safety lock prevents accidental use.
Requires combined finger and thumb adult operation to dispense boiling water.



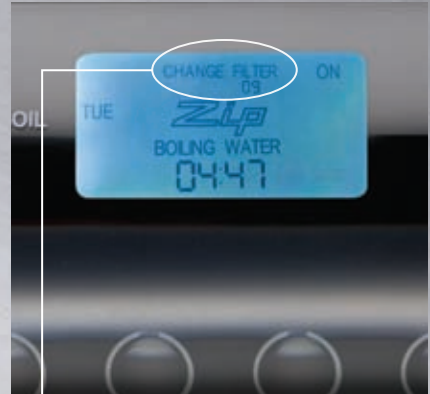
INSTANT BOILING WATER



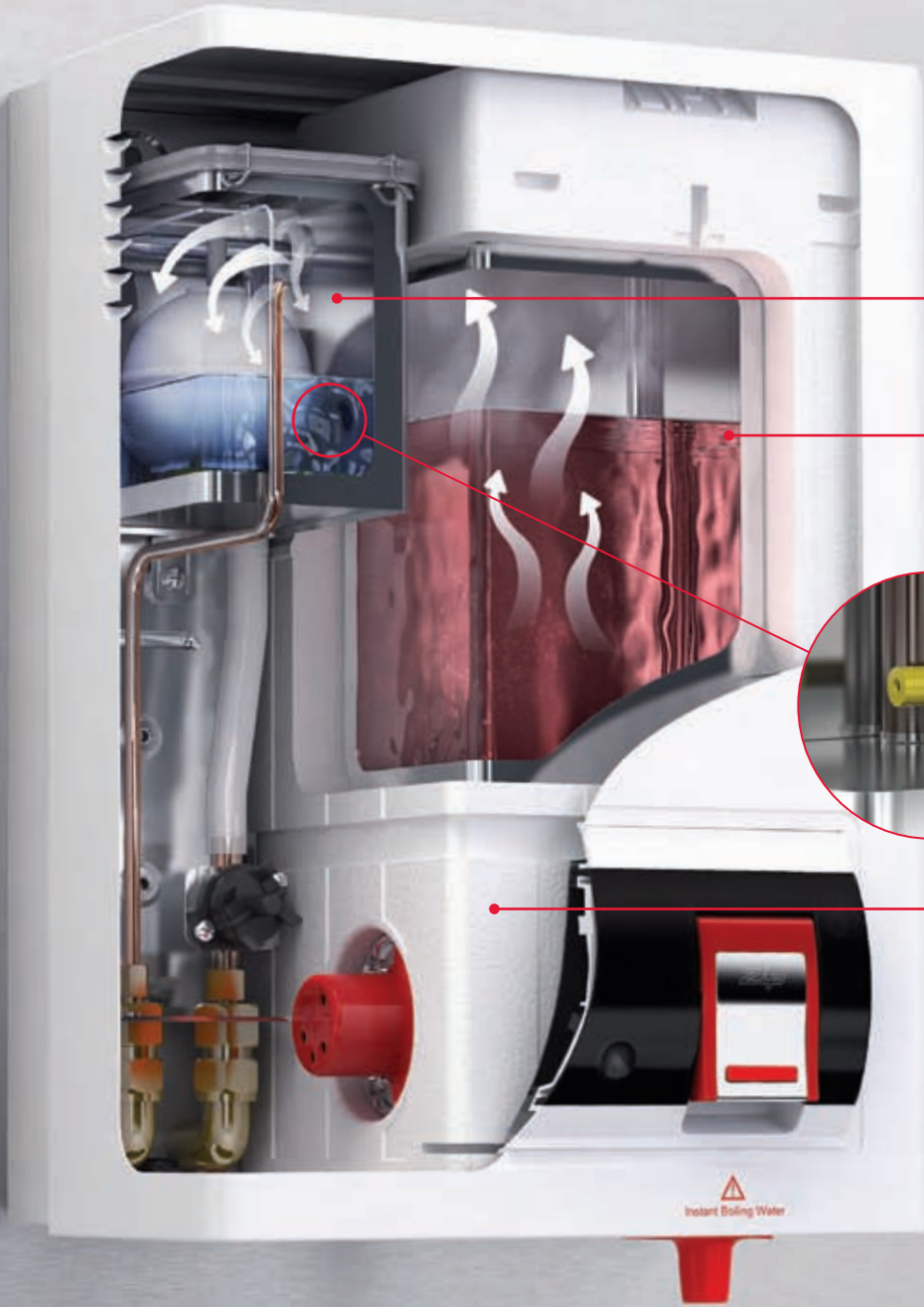
4. Locked touch-pad programming. Presets clock and variable functions, sets storage temperature 65°C to 100°C.



5. Base outlet improves pouring view. Cup level is close to sink level – making it easier to see and control.

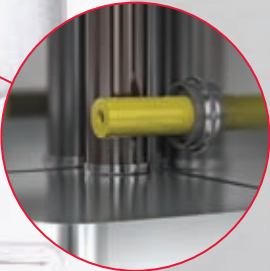


6. Signals when filter change is due. Saves any worries about missing recommended filter changing dates.



Patented twin chamber technology.
Stores incoming cold water separately from boiling water.

Patented steam-heat-boost system.
Recycles energy from steam to pre-heat incoming cold water.



Patented Teflon™ metering tube.
Regulates water inflow so boiling water is maintained at set temperature.

Moulded high temperature insulation.
Superior heat retention performance minimizes boiling water heat loss.

Instant Boiling Water

New electronic Zip Hydroboil: cuts energy consumption 5 ways



1. Steam-heat-boost recycles steam heat

Steam from stored boiling water is recycled within the Zip Hydroboil to pre-heat incoming cold water, stored in a separate cold water cistern. A patented metering tube accurately controls the flow of pre-heated water into the boiling chamber, to maintain stored water at boiling point.



2. Power-Pulse™ energy-saving technology

New Power-Pulse energy-saving technology reduces power consumption dramatically. Power-Pulse applies full power to heat boiling water only during heavy-usage periods. Power-Pulse cuts back to micro-pulse power during light usage periods, or when unused. Power-Pulse also maintains boiling water temperature more precisely than ever before. Power-Pulse is the latest in electronic control technology, and is exclusive to Zip world wide.



3. Sleep Mode powers down when inactive

Sleep-when-unused feature can be pre-set to activate after 2 or 4 hours of non-use. Stored water is maintained at $>65^{\circ}\text{C}$ in any sleep mode.



4. Sleep Mode powers down in the dark

Sleep-when-it-is-dark feature activates whenever the lights go off. This energy-saving instant boiling water feature is a world first for Zip.



5. Programmable 24/7 on/off power clock

The 24/7 on/off power clock can disconnect the power during the day, evenings or weekends. You can pre-set the power-on and power-off times twice daily each day for a seven day period.



Zip Econoboil

Thermostatically controlled instant boiling water system

Capacities 3.0, 5.0 and 7.5 litre.
Cups at a time 18, 30, or 45.
Recovery rate 100 cups/hr (3.0 litres).
Recovery rate 150 cups/hr (others).

Simple to use, with two-way safety tap.
Fingertip tap control for filling cups.
Tap locks ON to fill pots hands-free.

Twin-chamber boiling technology.
Unfiltered incoming water supply.
Original copper boiling chamber (suitable for soft-water areas).
White case, chrome plated brass tap.

One year warranty

Standard warranty: one year parts and labour warranty on tank and heater.



Zip Autoboil

Thermostatically controlled instant boiling water system

Capacities 1.5, 3.0, 5.0, 7.5 and 15 litre.
(Fascia on 15 litre model not as shown).
Cups at a time 9, 18, 30, 45 or 90.
Recovery rate 100 cups/hr (1.5 and 3.0 litres).
Recovery rate 150 cups/hr (others).

Simple to use, with two-way safety tap.
Fingertip tap control for filling cups.
Tap locks ON to fill pots hands-free.

Twin-chamber boiling technology.
Stainless steel boiling chamber.
Premium insulation.
Simple-to-service dual tank port.
Power on indicator.
Chrome plated brass tap.
Five-micron triple-action filtration.
White steel or stainless steel case.

Three year warranty

Extended warranty: three year pro-rata warranty on tank; two year conditional warranty on heater; first year parts and labour, second year parts only.



New electronic Zip Hydroboil

Electronically controlled instant boiling water system

Capacities 3.0, 5.0 and 7.5 litre.
Cups at a time 18, 30 or 45.
Recovery rate 100 cups/hr (3.0 litres).
Recovery rate 150 cups/hr (others).

New cool-to-touch two-way safety tap.
Fingertip tap control for filling cups.
Tap locks ON to fill pots hands-free.
Child-proof safety lock.
Lock indicator on display panel.
Variable boiling temperature control.
Factory temperature set to 98°C.
Touch-panel function setting."

Twin-chamber boiling technology.
Stainless steel boiling chamber.
Simple-to-service dual tank port.
Five-micron triple-action filtration.
New energy-saving Power-Pulse™.
Sleep mode when idle 2 or 4 hours.
Sleep mode when lights go out.
Inbuilt twice-a-day on/off 24/7 clock.
Signals when filter change is due.

Five year warranty

Extended warranty: five year pro-rata warranty on tank; two year warranty on parts and labour.

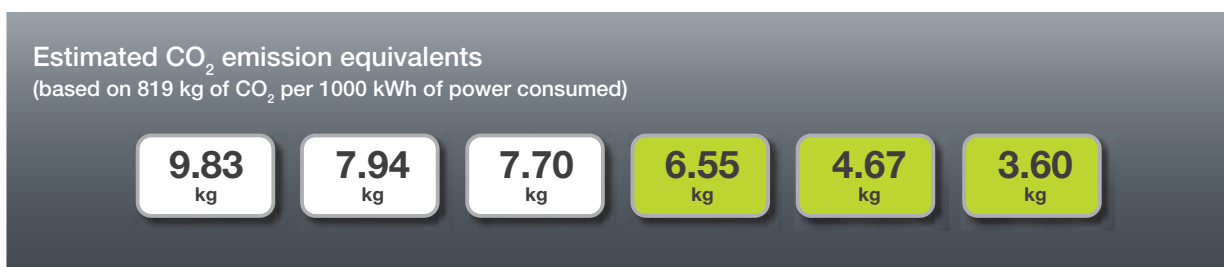
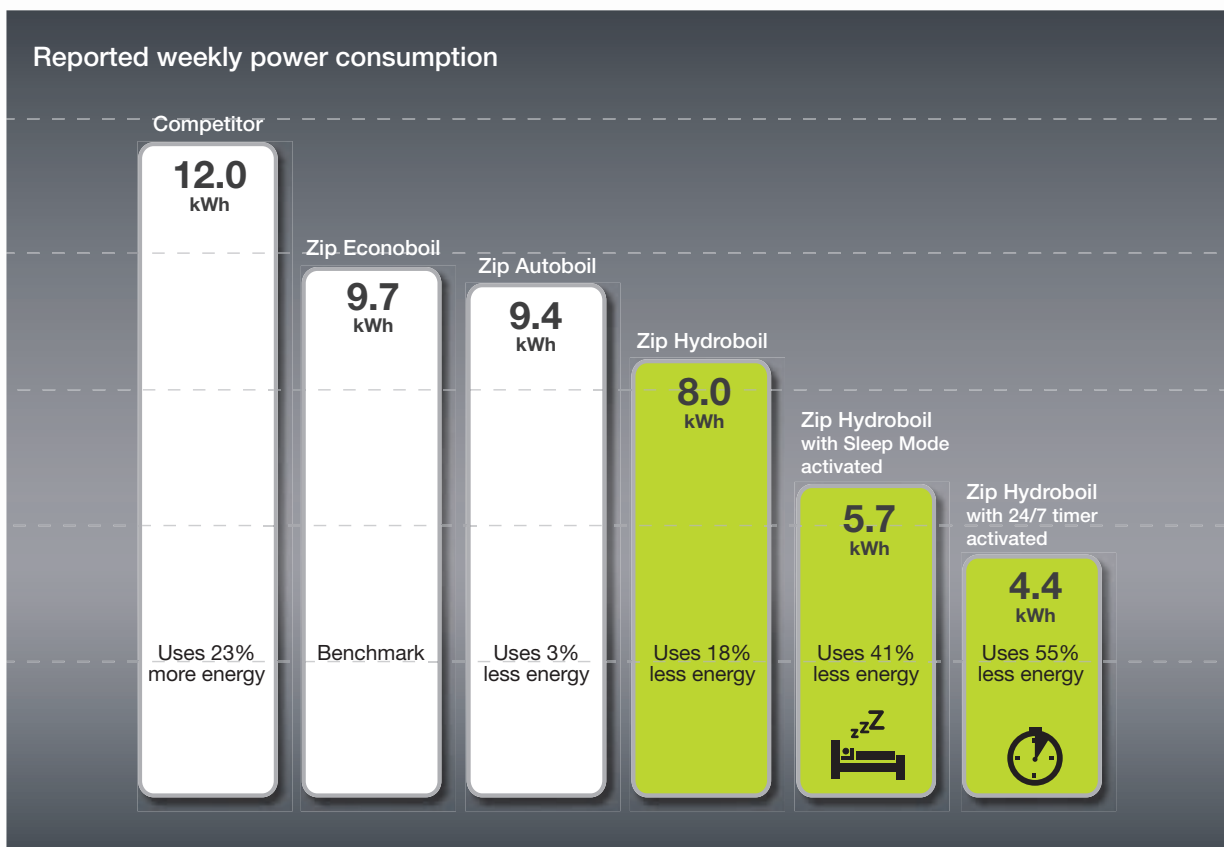
Data sheets listing models of 15, 25 and 40 litre capacity are also available. Specifications differ from those of smaller models.



New electronic Zip Hydroboil: the most energy-efficient instant boiling water system yet

Typical results from laboratory testing of five-litre instant boiling water systems are shown below.

- Tests were conducted on M1000 AMPY metering equipment 2706306, 2706307 and 2306308.
- Table shows estimated weekly consumption without provision for water draw-off.
- Each 167 ml cup drawn off = approximately an added 17 watt hours of power, or \$0.002 per cup.
- Estimated power usage is based on continuous operation except where noted.
- Results, sleep mode = 7 day test, sleep mode effective 7 pm to 7 am Mon-Fri, all day Sat/Sun.
- Results, 24/7 on/off timer = 7 day test, set to power OFF 5 pm to 7 am Mon-Fri, all day Sat/Sun.





HYDROEON

11

INSTANT BOILING WATER

Choosing the right capacity to meet your needs is easy

1. Estimate the number of cups of boiling water required at any one time.
2. Check capacities under the heading of “cups at one time” in the table below.
3. Choose a Zip instant boiling water system giving the number of cups required.
4. Check case dimensions to ensure top and side clearances can be allowed for.

Remember: busy kitchens may need more than one Zip to avoid the risk of a queue forming during peak periods.

Product Selection Table

Zip Product	Capacity	Cups at one time	Recovery Cups hr	Power Rating kW	Filtered	Models				Dimensions (mm) W x D x H
						White Case		Stainless Steel Case		
						Order Code	Model No	Order Code	Model No	
Zip Hydroboil (a)	3.0 L	18	100	1.5	Yes	203065	HBE6-003FT	203067	HBE6-103FT	289 x 180 x 431
Zip Hydroboil (a)	5.0 L	30	150	2.4	Yes	205065	HBE6-005FT	205067	HBE6-105FT	318 x 198 x 465
Zip Hydroboil (a)	7.5 L	45	150	2.4	Yes	207065	HBE6-007FT	207067	HBE6-107FT	318 x 198 x 578
Zip Hydroboil (b)	15 L	90	150	2.4	Yes	11065	HB015FT	11067	HB115FT	390 x 299 x 600
Zip Hydroboil (b)	25 L	150	215	3.6	Yes	12065	HB025FT	12067	HB125FT	390 x 299 x 780
Zip Hydroboil (b)	40 L	240	360	2x3.0	Yes	04065	HB040FT	04067	HB140FT	515 x 284 x 840
Zip Autoboil	1.5 L	9	100	1.5	Yes	01055	AB001FT	01057	AB101FT	289 x 180 x 335
Zip Autoboil	3.0 L	18	100	1.5	Yes	03055	AB003FT	03057	AB103FT	289 x 180 x 431
Zip Autoboil	5.0 L	30	150	2.4	Yes	05055	AB005FT	05057	AB105FT	318 x 198 x 465
Zip Autoboil	7.5 L	45	150	2.4	Yes	07055	AB007FT	07057	AB107FT	318 x 198 x 578
Zip Autoboil	15 L	90	150	2.4	Yes	11055	AB015FT	11057	AB115FT	390 x 299 x 600
Zip Econoboil	3.0 L	18	100	1.5	No	03042	EB003	-	-	289 x 180 x 431
Zip Econoboil	5.0 L	30	150	2.4	No	05042	EB005	-	-	318 x 198 x 465
Zip Econoboil	7.5 L	45	150	2.4	No	07042	EB007	-	-	318 x 198 x 578

Standard cup = 167 ml

(a) Supplied with black tap until 2009 models are available.

(b) Specifications of larger Zip Hydroboil models differ from smaller models – see data sheets for details.

Do you need any of these accessories for your installation?

Zip Five Star Water Filtration Cartridge for regular filter replacement – order code 28002.

Zip Wall Mounted Tun Dish for installation of your system with concealed vent plumbing – order code 99017.

Zip Sink Mounted Tun Dish for installation of your system with vent discharging over sink – order code 99018.

Zip Drained Drip Tray for installation over a kitchen bench without a draining board – order code 99056.

Zip Portable Drip Tray for installation where no drip drainage can be provided – order code 99043.

How often should Zip water filtration cartridges be replaced?

For trouble-free operation, Zip filter cartridges should be replaced at least once each 12 months. Replacement frequency may be affected by heavy usage or by contaminants in the water supply. It is essential that filter cartridges be replaced only with genuine Zip Five Star filter cartridges. Regular replacement can be arranged with your installer or by contacting Zip on 1800 460 222.

How frequently should your Zip systems be inspected?

Zip maintains a national network of comprehensively-trained service technicians and service agents to deal promptly with any emergencies. A range of Preventive Maintenance Plans is also available, providing an annual checkup to help keep your Zip in first-class order.

Call Zip on 1800 460 222 for details and a free Maintenance Plan quotation to meet your needs.

Installation is as simple as **A-B-C**

A. Location

The system should be installed over a sink draining board or over a bench top equipped with a portable or plumbed drip tray. Tap outlet clearance to sink should be no more than 200 mm unless pot filling requires greater. Service access clearances must be at least 150 mm above, 65 mm to left, 20 mm to right.

The vent within the case must discharge to a safe visible position as, under certain conditions, the vent may discharge cold water, boiling water, and/or steam. The vent pipe outlet must be connected via a tun dish to a 12.7 mm OD copper vent pipe which has a continuous fall, is no more than 3 metres long, and has no more than 3 right angle bends.

B. Electrical

The system should be plugged to a 10 amp GPO delivering 220–240 V AC 50 Hz within 1500 mm. For a neat concealed electrical connection, you can connect cable from the rear directly to the internal terminal block. Installation must comply with current AS/NZS 3350 wiring regulations.

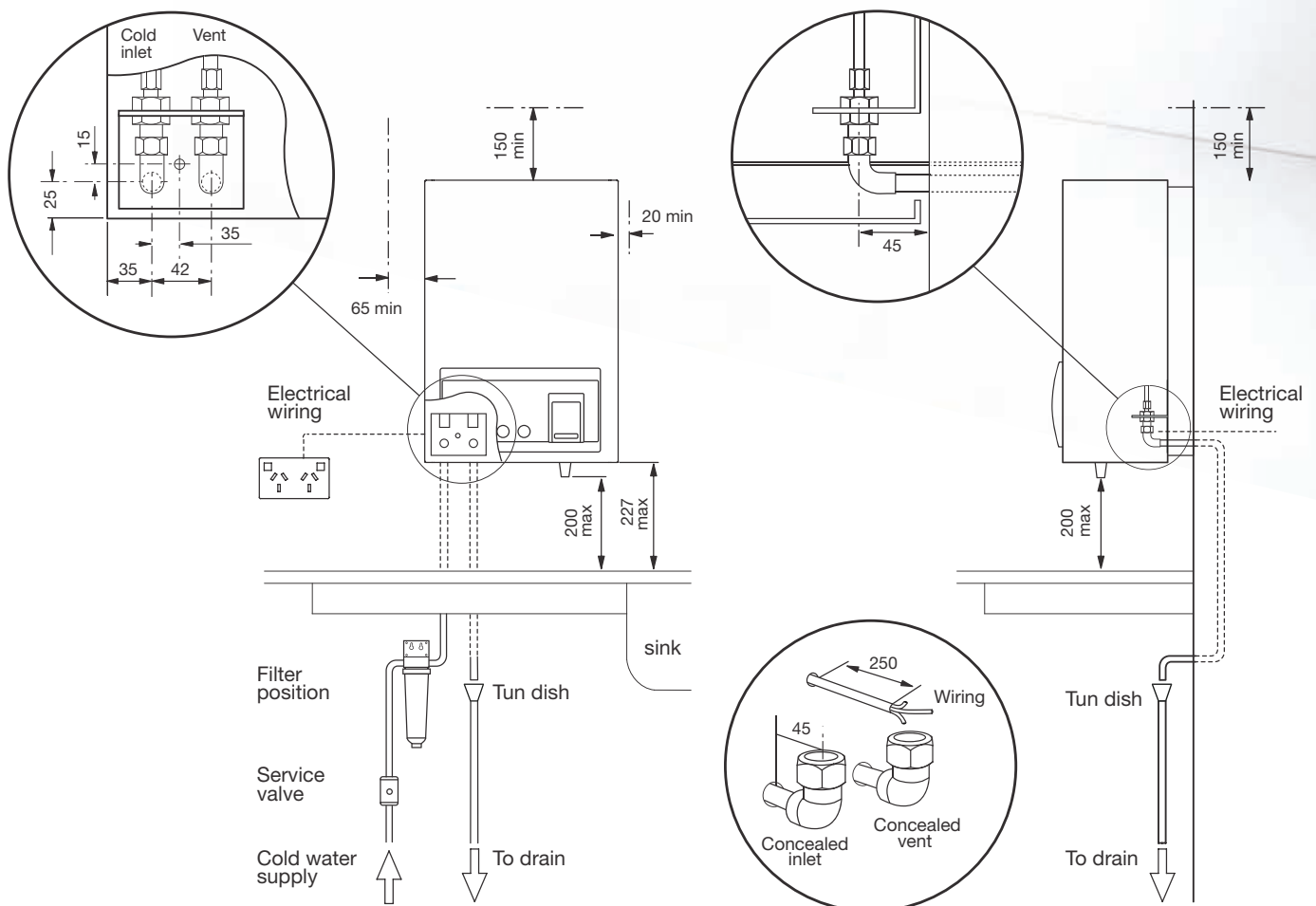
C. Plumbing

The system must be installed by a qualified tradesperson and in accordance with the instructions supplied with the system and AS/NZ 3500 plumbing regulations. The water supply must be potable (drinkable) and deliver at least 2 litres per minute at a minimum dynamic pressure of 100 kPa.

A 350 kPa pressure reducing valve must be installed if water pressure is likely to exceed 700 kPa.

An isolating valve must be installed between the water supply and the system. For a concealed plumbing connection, connect inlet and vent pipes from the rear via 12.7 mm capillary elbows as shown.

For an exposed plumbing connection, connect inlet and vent pipes from the base of the case directly to 12.7 mm compression fittings.





WaterMark
Lic. WMKA00099
AS3498 - SAIG.



Quality Endorsed Company
ISO 9001:2000
Lic. QEC1913
2/11/2004



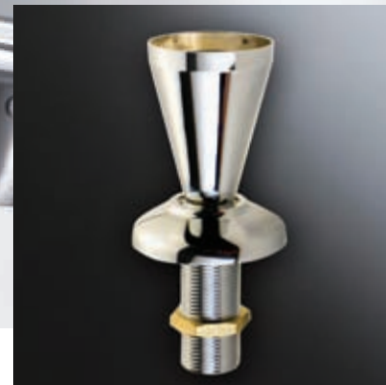
Incoming mains-water filtration kit – for under-sink installation



Portable drip tray – for Zip Hydroboil installation away from sink



Wall mounted tun dish – for concealed plumbing to drainage



Sink mounted tun dish – to drain under sink

www.zipindustries.com

Australia

Zip Heaters (Aust) Pty Ltd
67 Allingham Street
Condell Park NSW 2200
Phone +61 2 9796 3100
Fax +61 2 9796 3858
zipindustries.com

New Zealand

Zenith Heaters Ltd
Unit 2/15 Moselle Avenue
Henderson
Auckland
Phone +64 9 838 8612
Fax +64 9 838 8614
zenithheaters.com

United Kingdom

Zip Heaters (UK) Ltd
14/15 Bertie Ward Way
Dereham
NR19 1TE Norfolk
Phone +44 870 608 8888
Fax +44 136 269 2448
zipheaters.co.uk

Europe

Clage GmbH
Pirolweg 1-5
D-21337 Lüneburg Germany
Phone +49 4131 89010
Fax +49 4131 8320
clage.de

Africa

Franke Manufacturing
and Distribution SA (Pty) Ltd
1194 South Coast Road
Mobeni 4060 South Africa
Phone +27 31 469 3036
Fax +27 31 469 3052

Asia Pacific

Hang Tat Heating
Systems Consultants
Unit 1 Upper G/F
New Port Centre
116 Ma Tau Kok Road
To Kwa Wan Kowloon
Hong Kong
Phone +852 2363 2334
Fax +852 2764 4034

Zenith International
Philippines Inc.
3F Le Mar Ben Building
747 San Bernardo Street
Sta Cruz Manila
Philippines 1003
Phone +632 733 4526 loc123
Fax +632 734 3349
zenithinternational.ph

Multico Building Products Pte Ltd
22A Lim Teck Boo Road
#01-01C
Henley Industrial Building
Singapore 537002
Phone +65 6 283 8888
Fax +65 6 283 8138
multico.com.sg

Thada Engineering Co Ltd
54-62 Surasak Road
Bangkok Thailand
Phone +66 2 238 3275
Fax +66 2 238 3277

Greenfill Trading Co
PO Box 10534
Taipei Taiwan
Phone +886 22 772 9626
Fax +886 22 772 1588

The terms 'Zip', 'Power-Pulse', 'Hydroboil', 'Autoboil', 'Econoboil' and 'HydroTap' are trade marks.

Copyright October 2008, brochure 01072009



Instant Boiling Water

